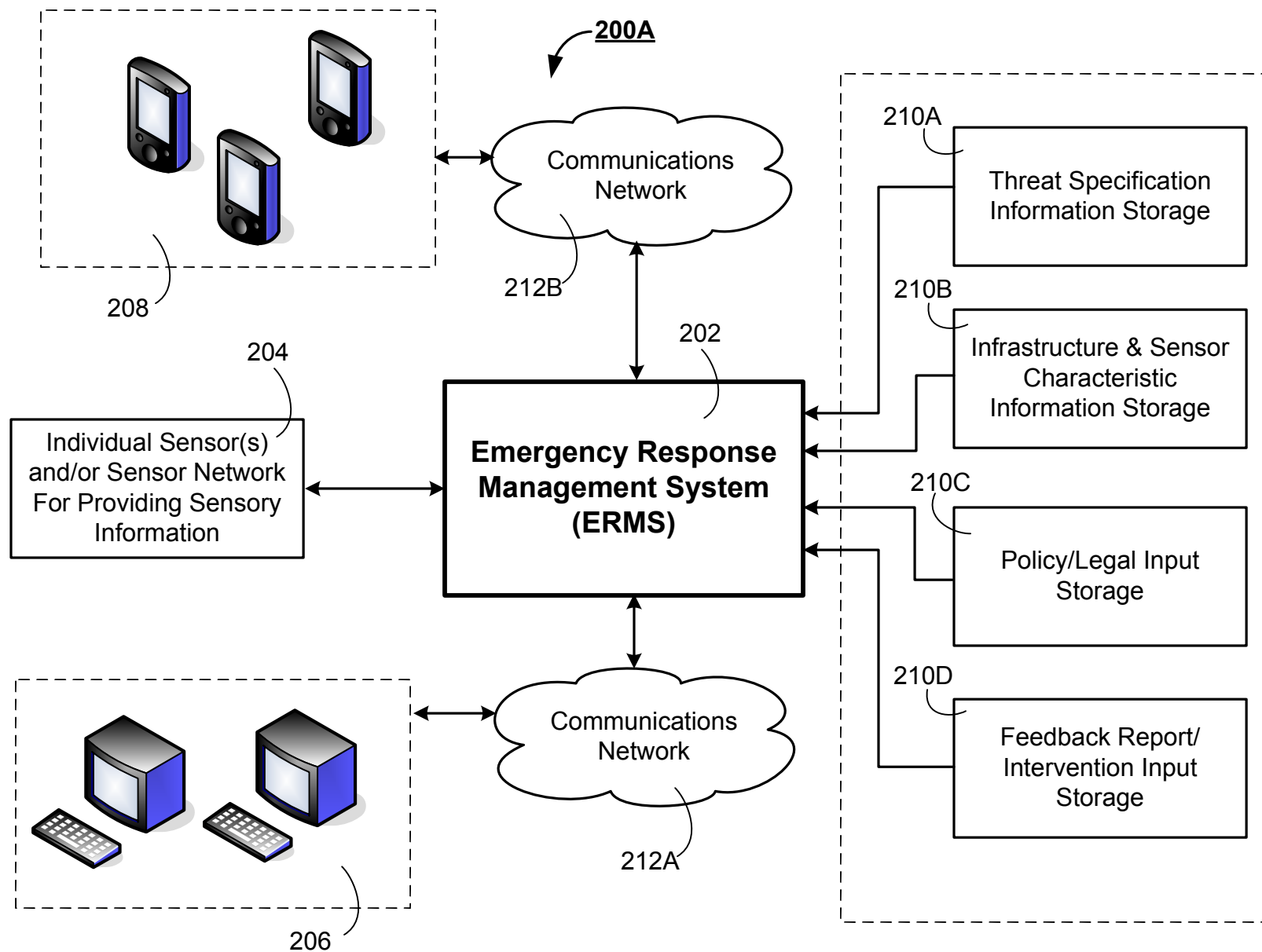


(1/19)

**Figure 1**

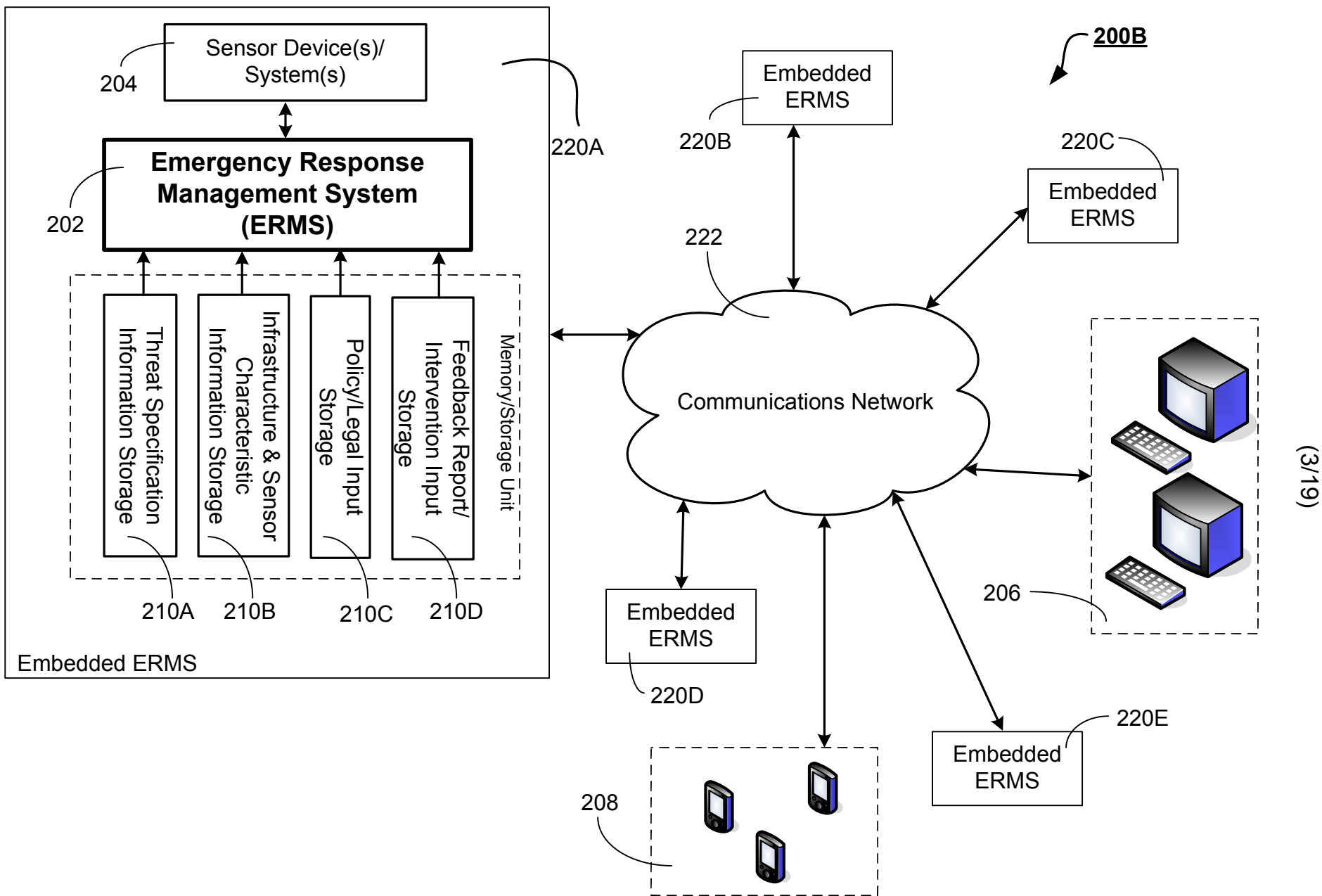
Example: ERMS Concept



(2/19)

**Figure 2A**

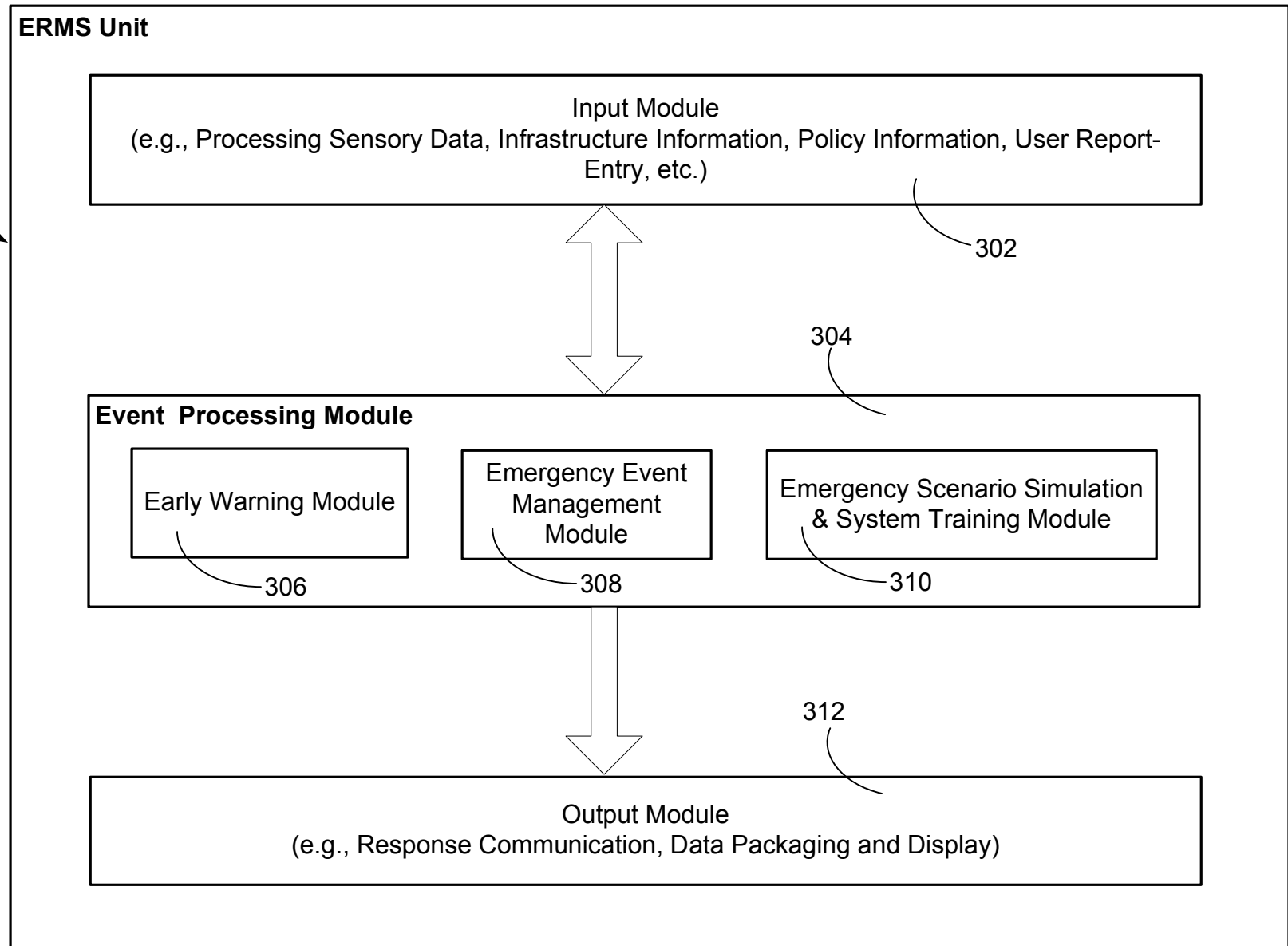
Example: ERMS Architecture



**Figure 2B**

Example: ERMS Architecture

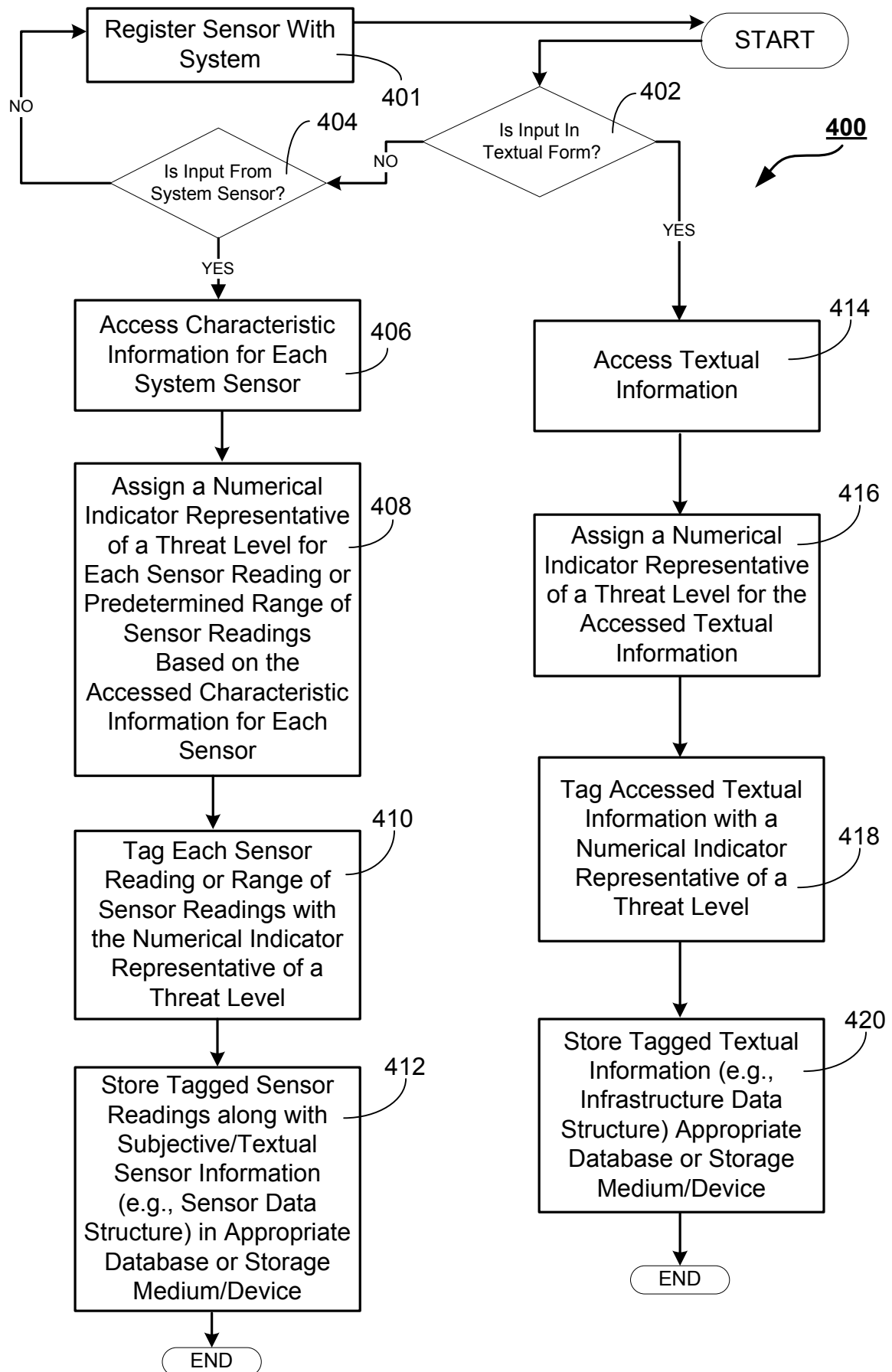
202



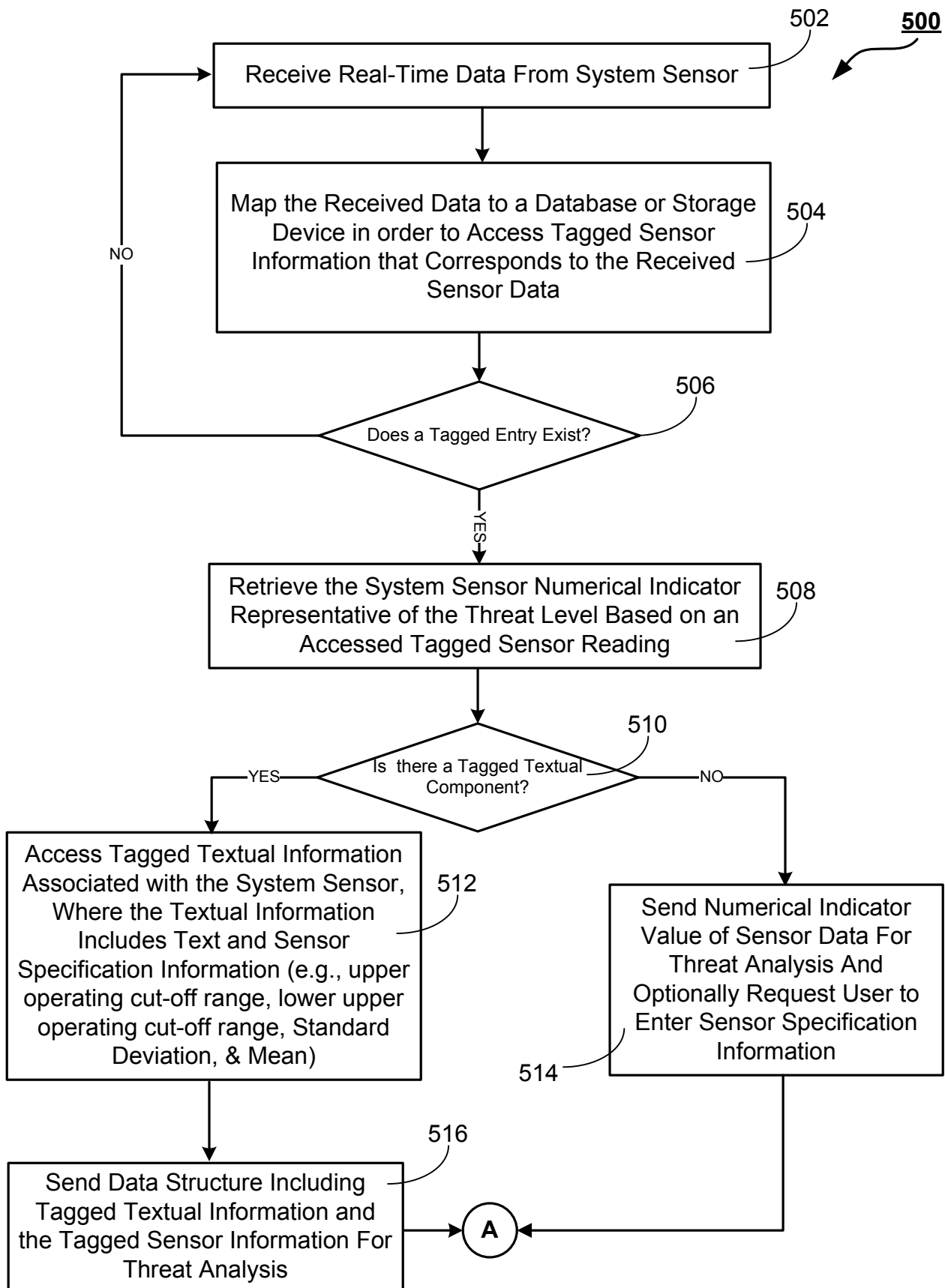
(4/19)

**Figure 3**

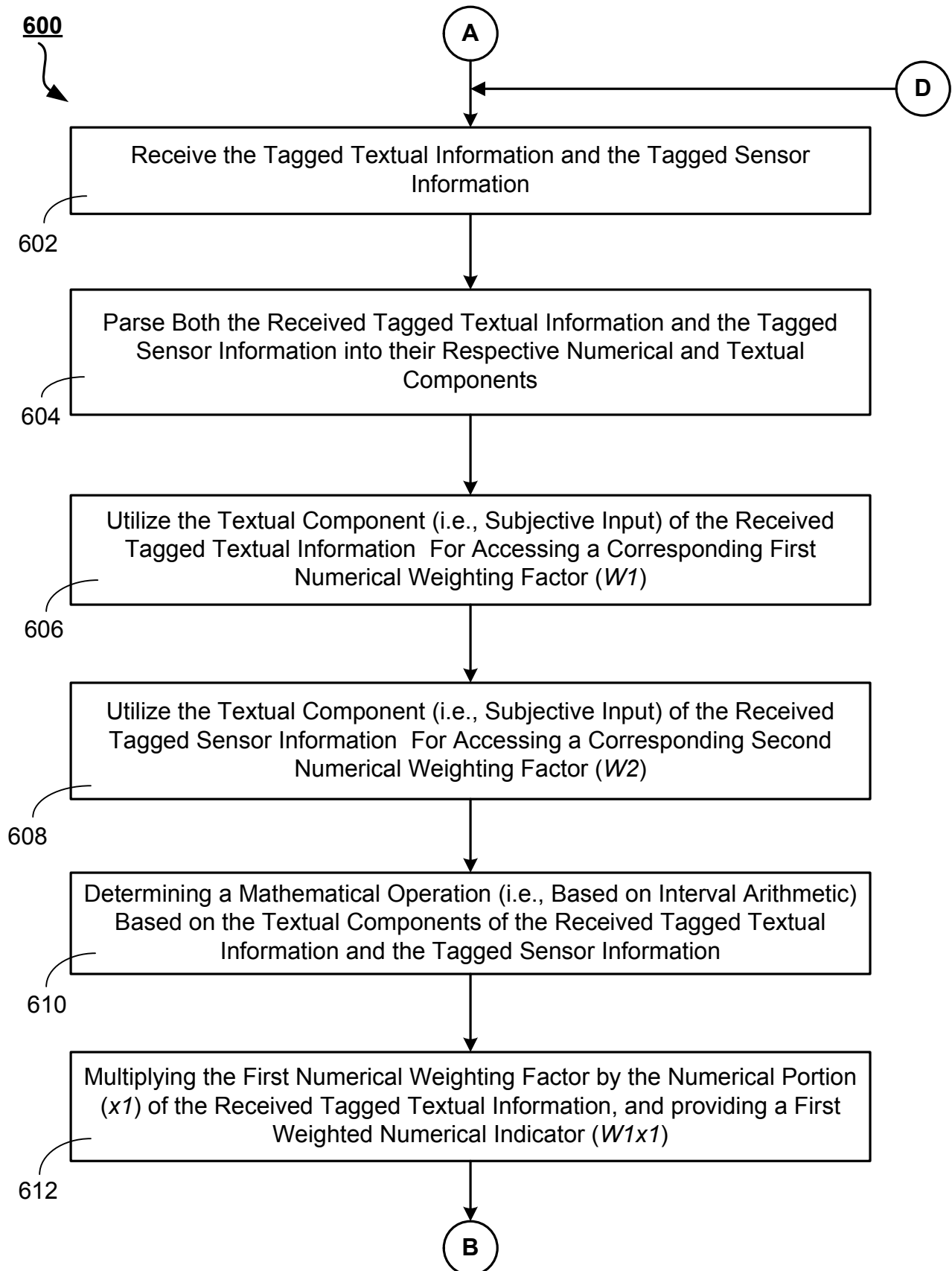
Example: ERMS

**Figure 4**

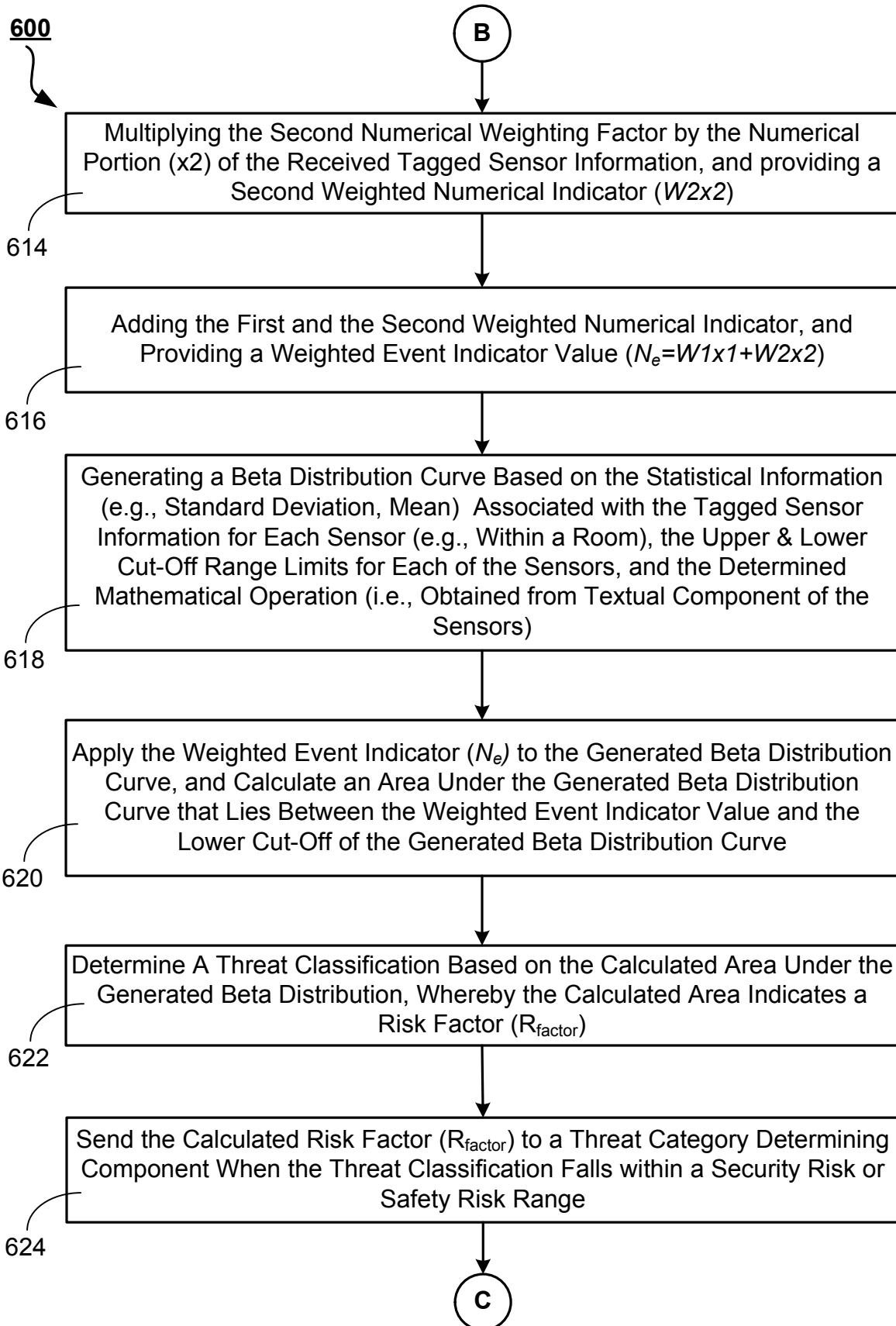
Example: Threat Index Tagging Component

**Figure 5**

Example: Threat Index Retrieving Component

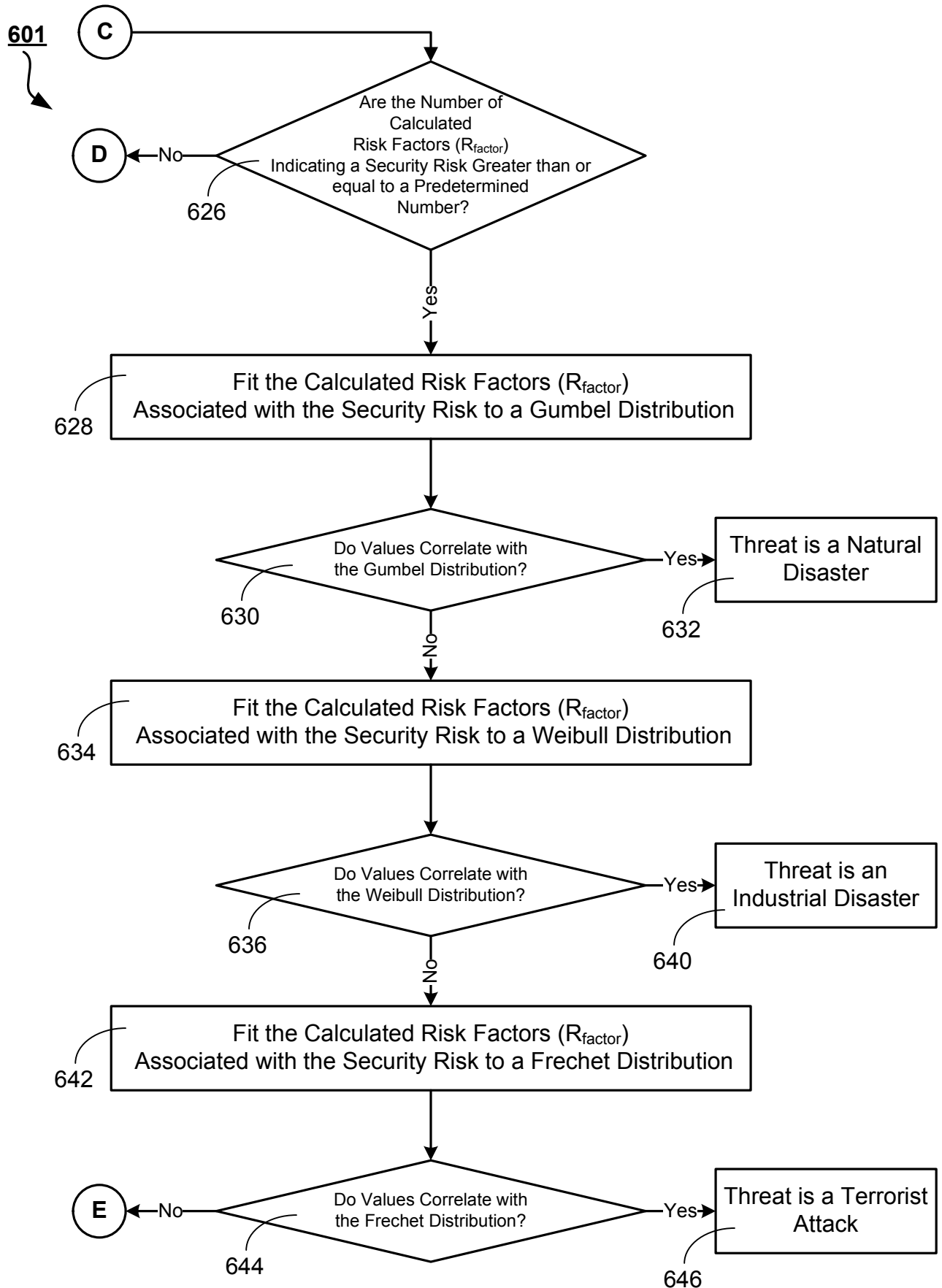
**Figure 6A**

Example: Event Analyzer Component

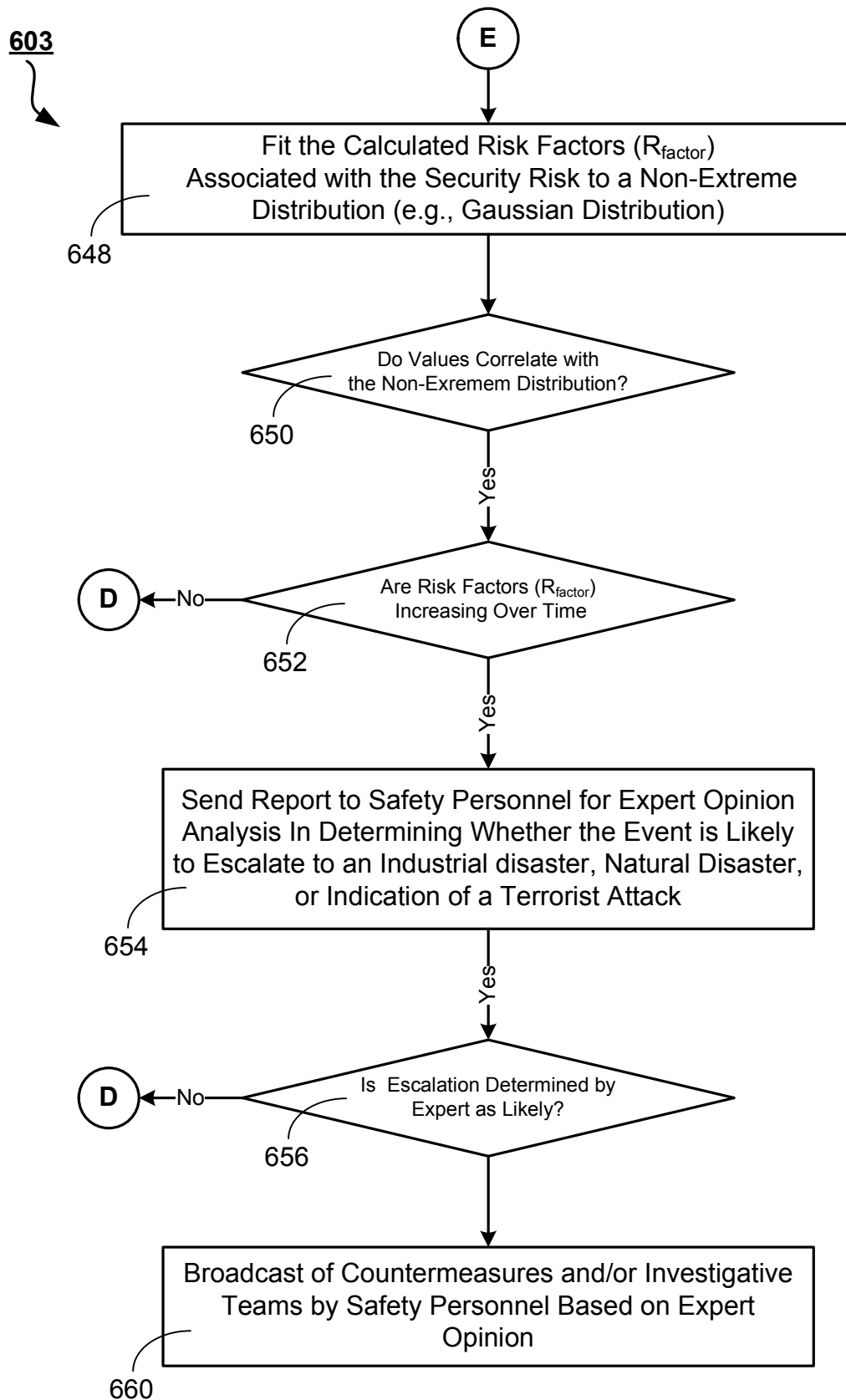
**Figure 6B**

Example: Event Analyzer Component

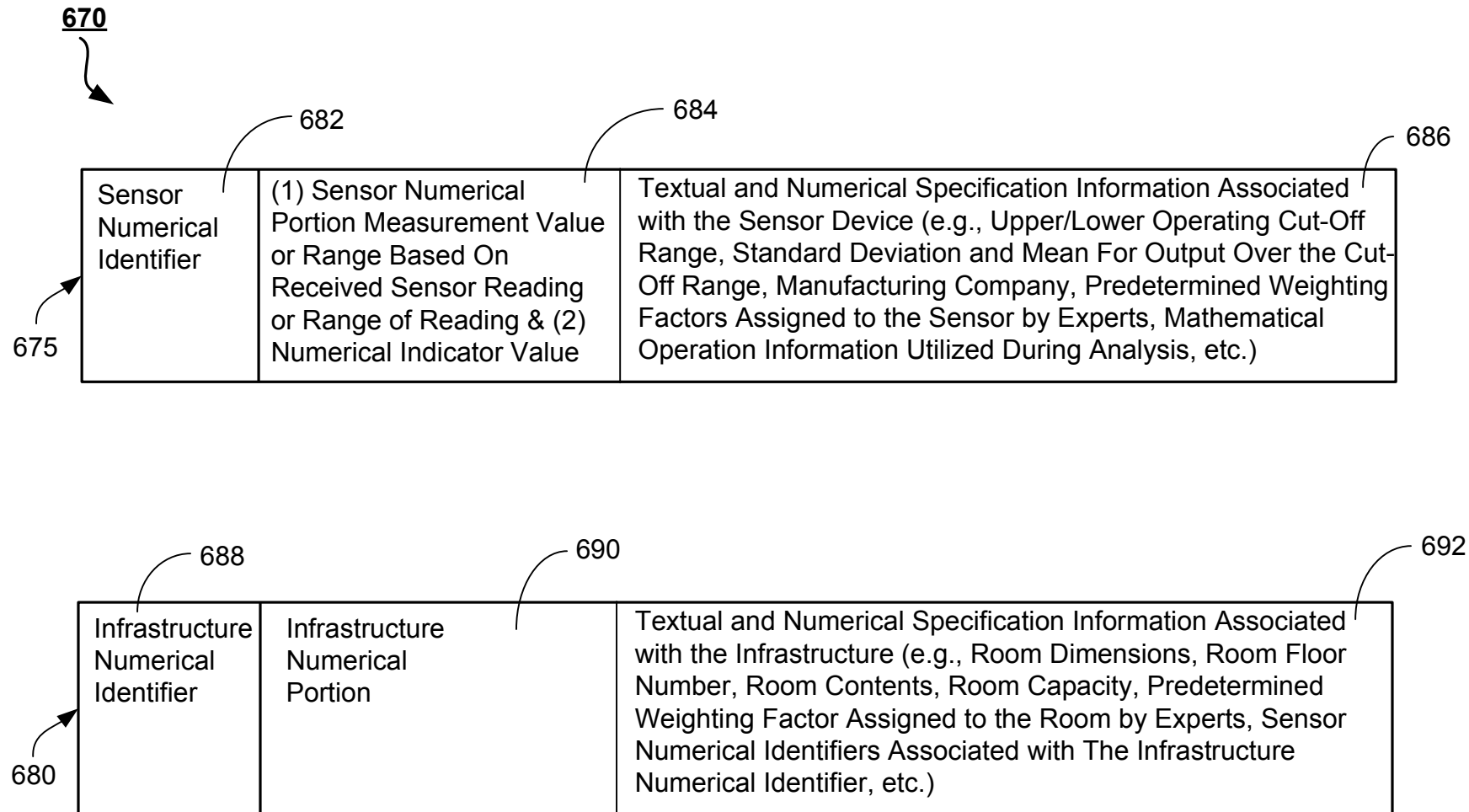


**Figure 6C**

Example: Threat Category Determining Component

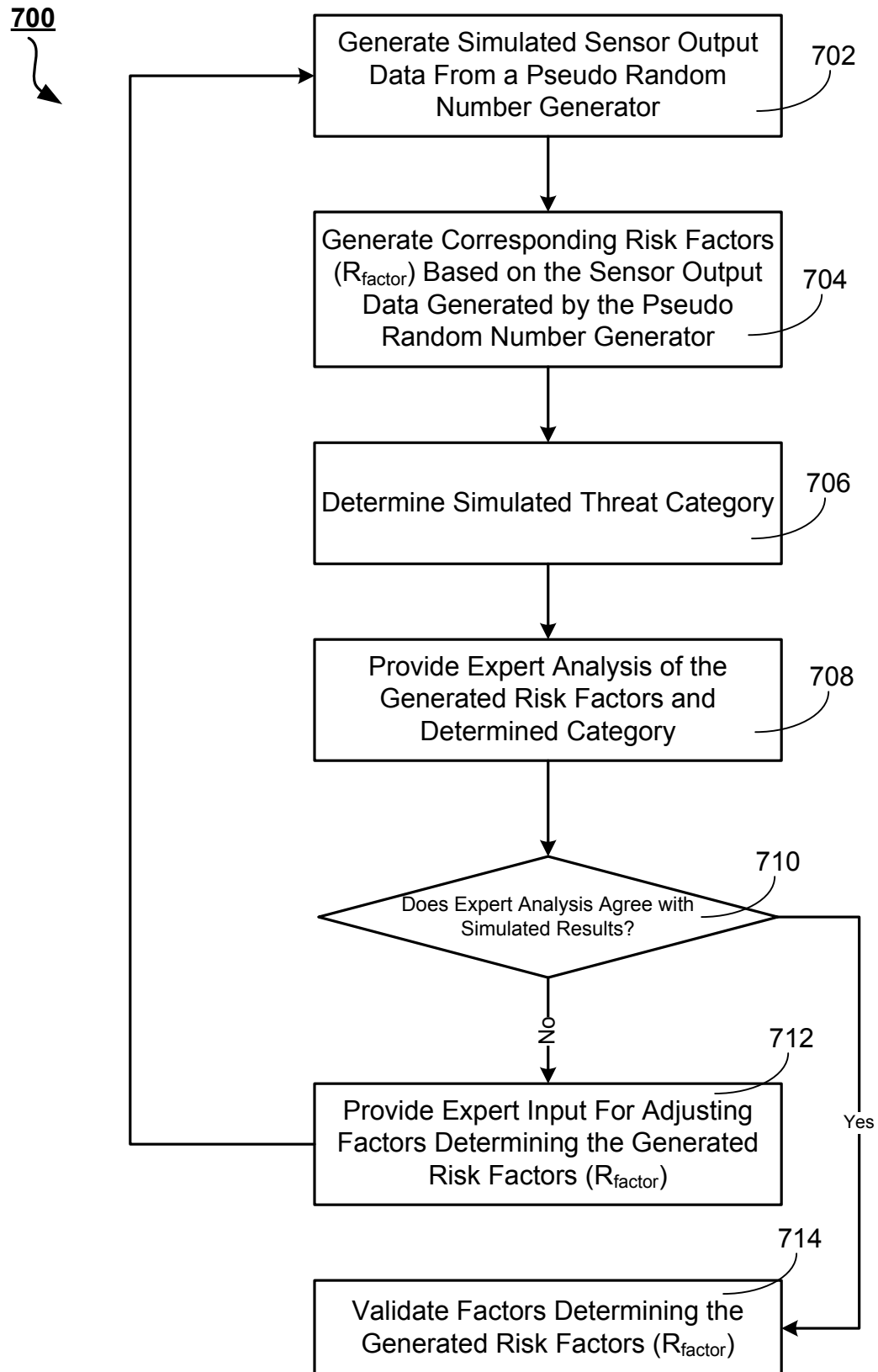
**Figure 6D**

Example: Early Warning Component

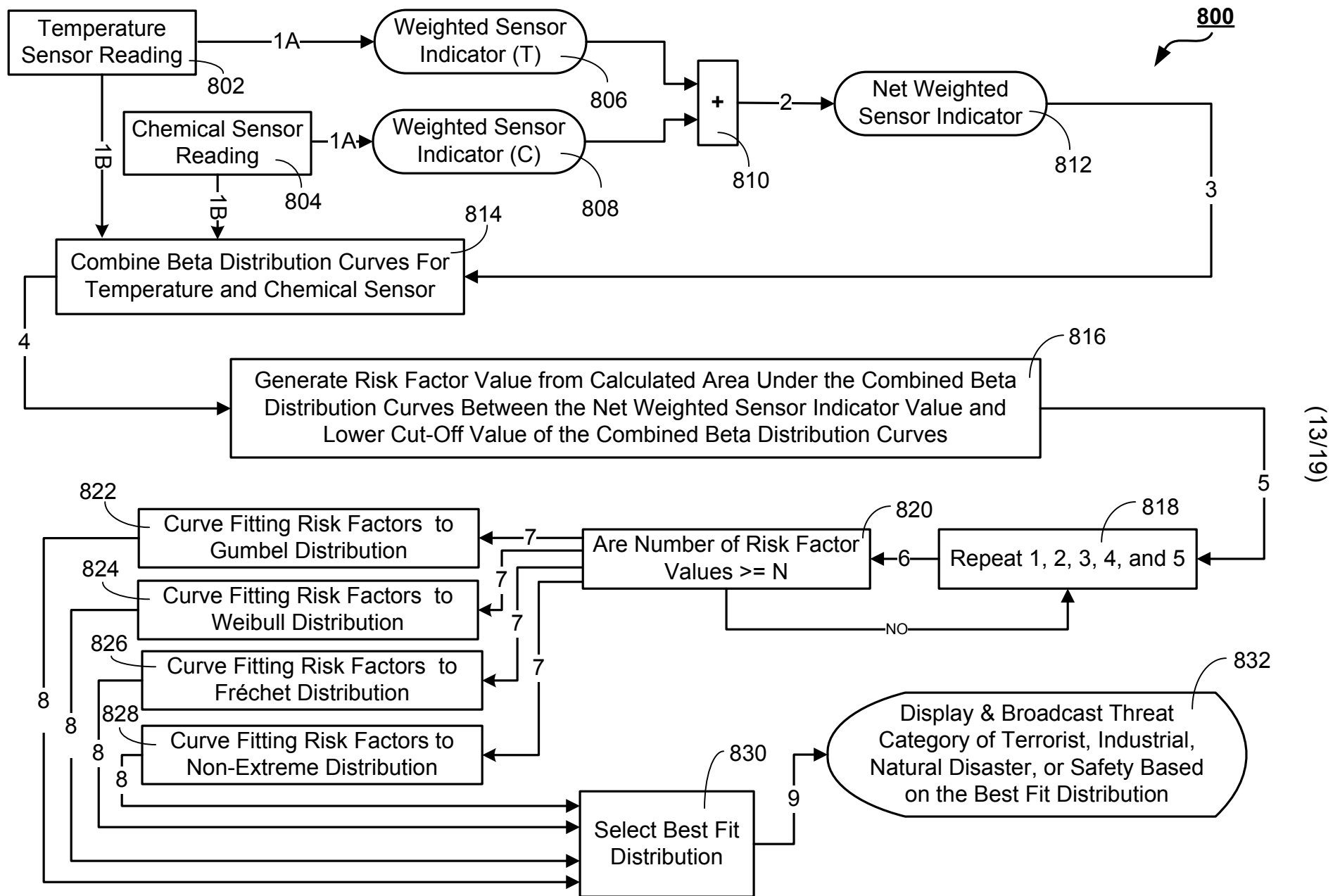


**Figure 6E**

Example: Tagged Information in Data Structure

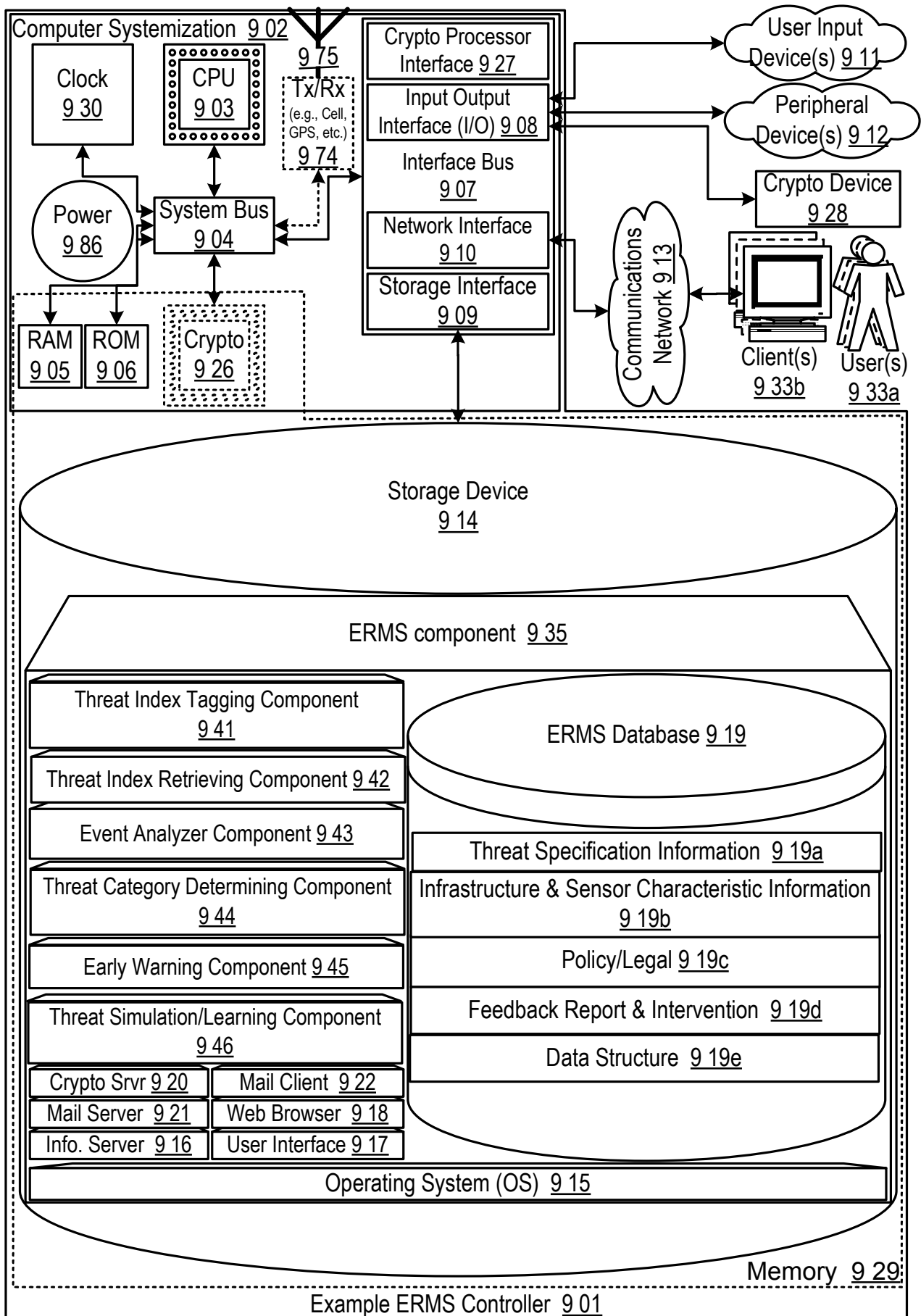
**Figure 7**

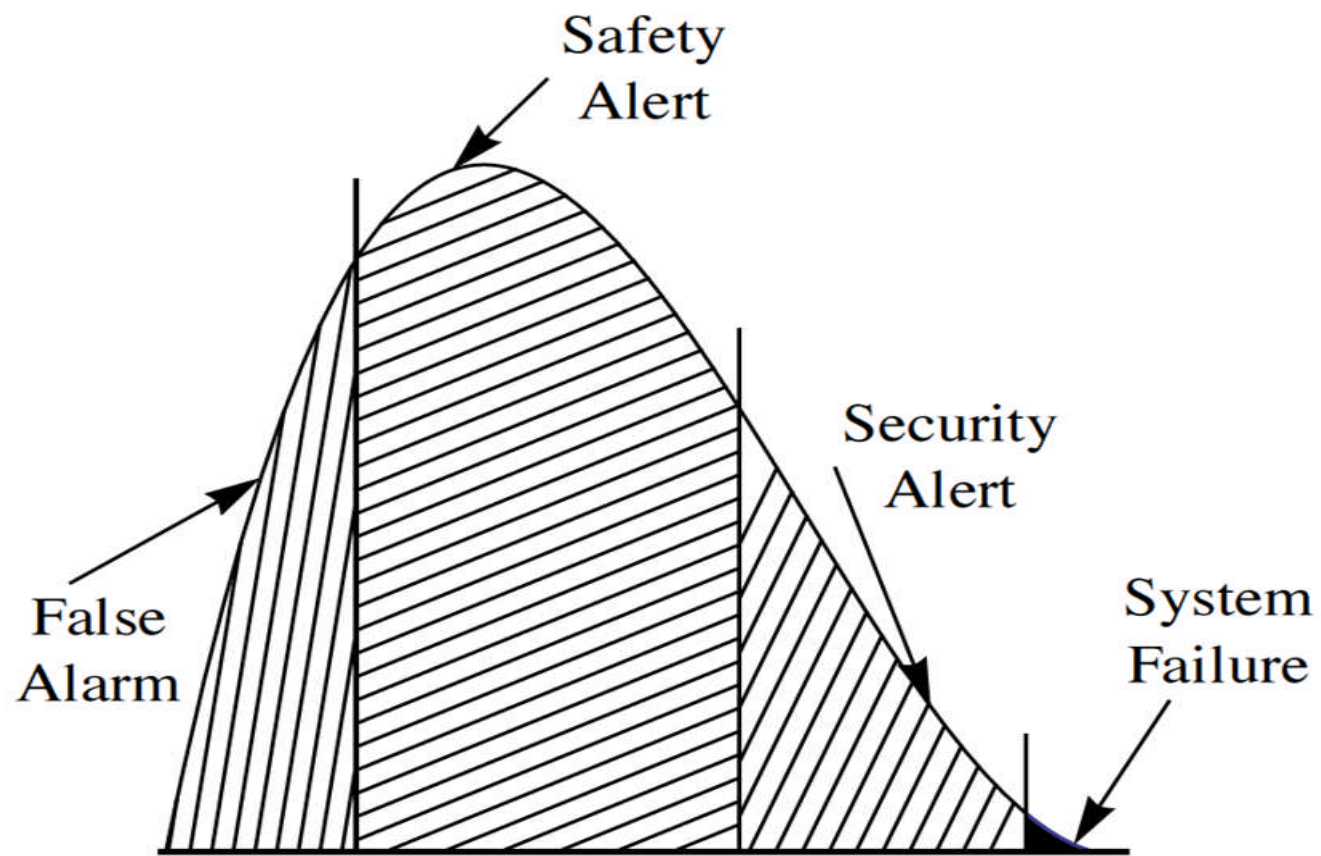
Example: Threat Simulation/Learning Component



**Figure 8**

Example: Threat Determination Operation

**Figure 9**



**Figure 10**

Example: Threat Probability Density Function

## The LiveDesign System Units

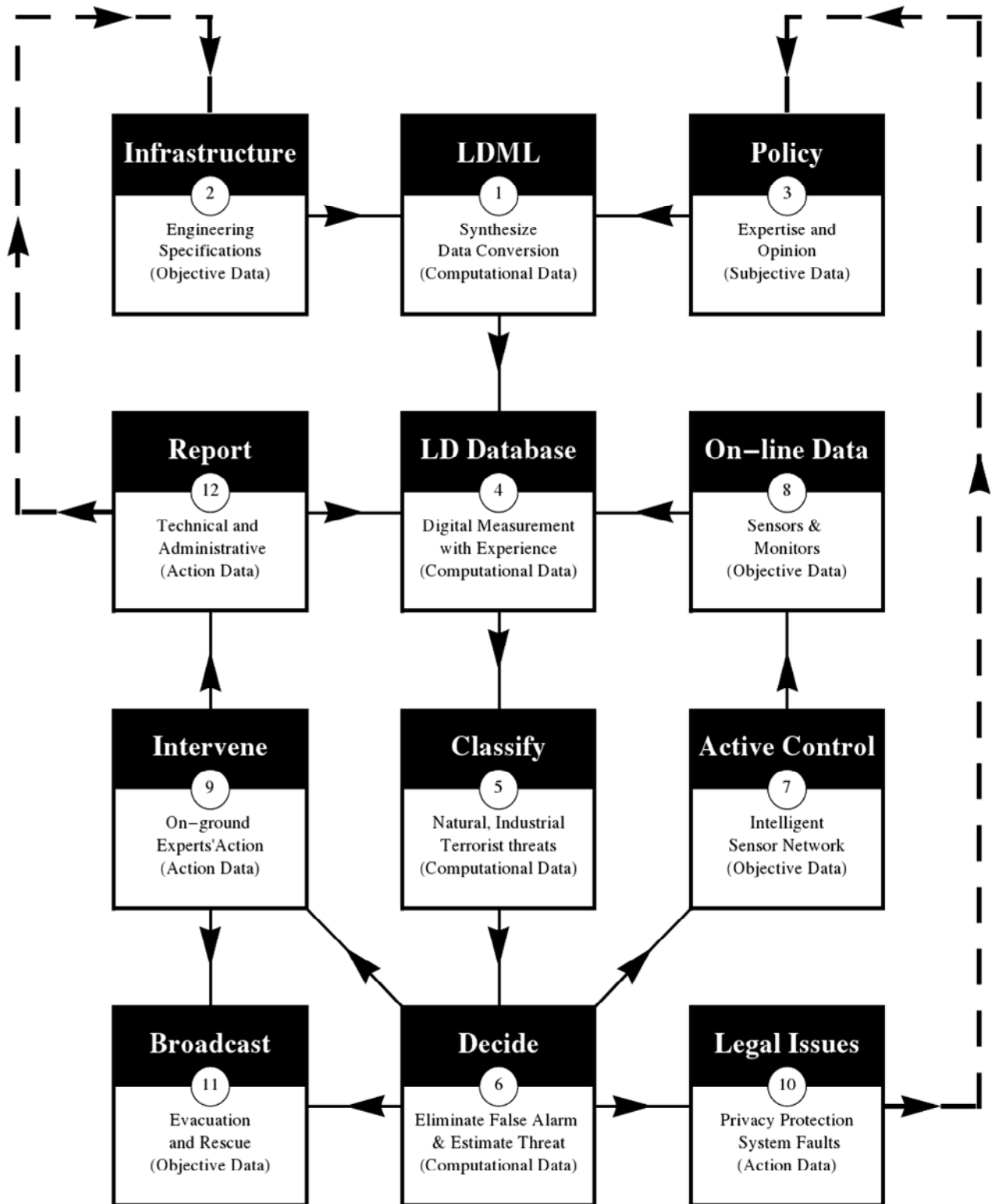
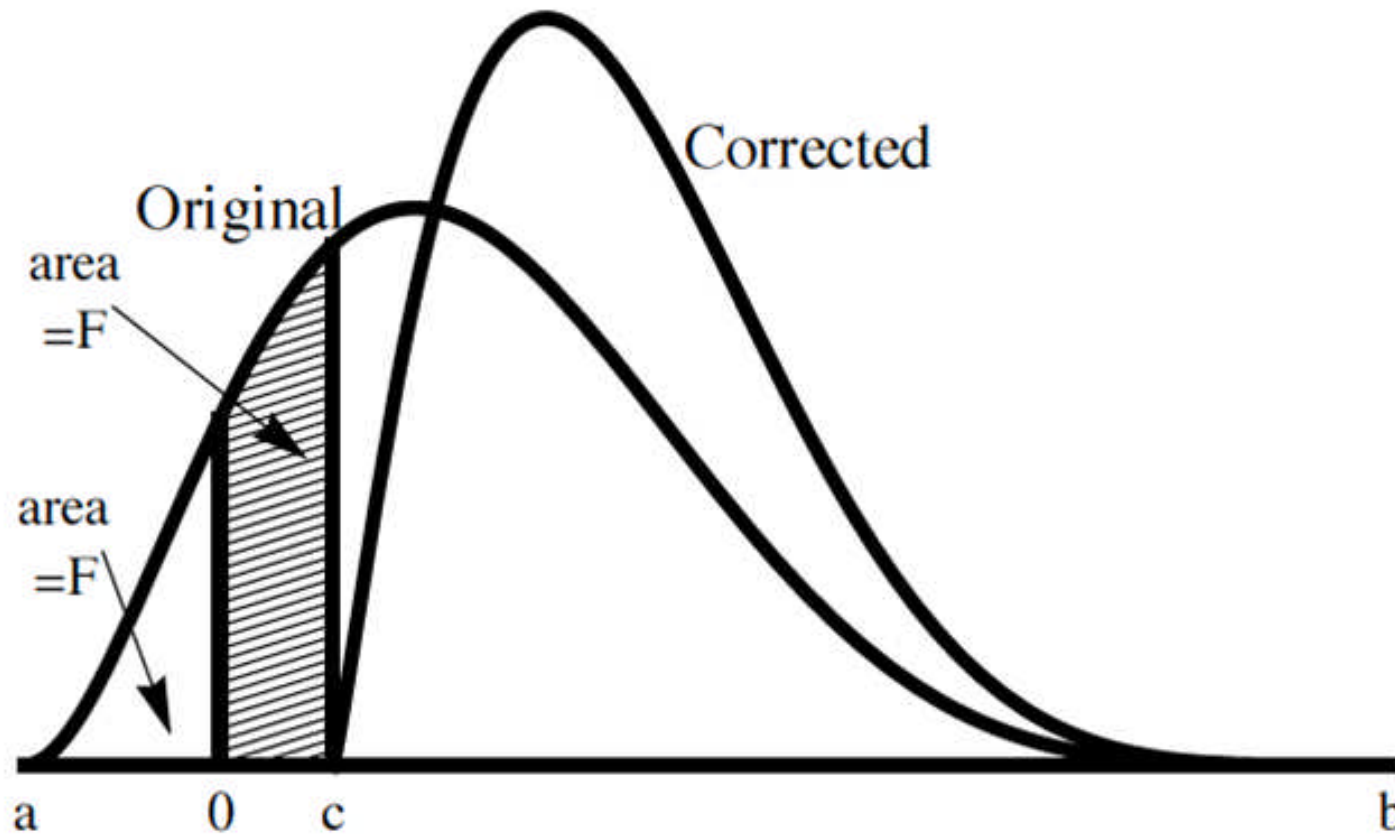


Figure 11

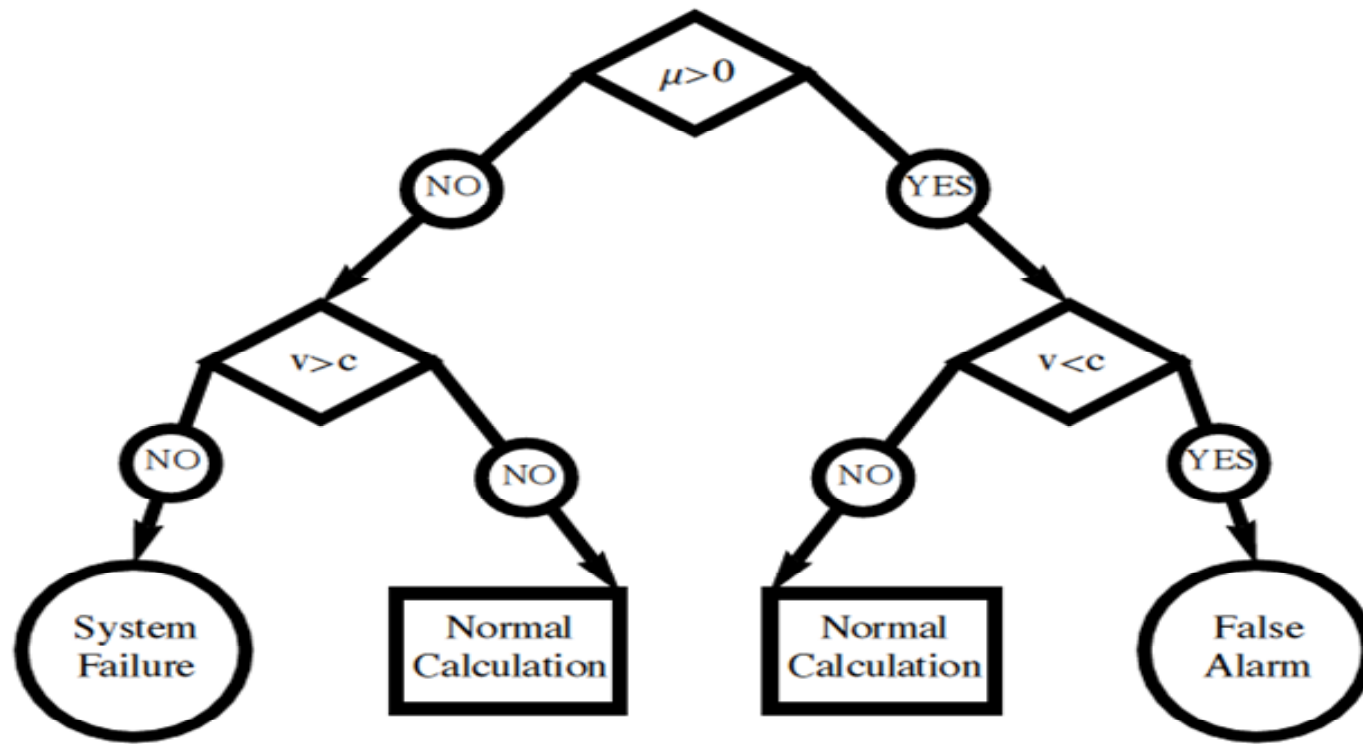
Example: LiveDesign ERMS Modules





**Figure 12**

Example: Corrected Interval to Avoid Zero for  $\beta$ -Distribution



**Figure 13**

Example: False Alarm & System Failure Process

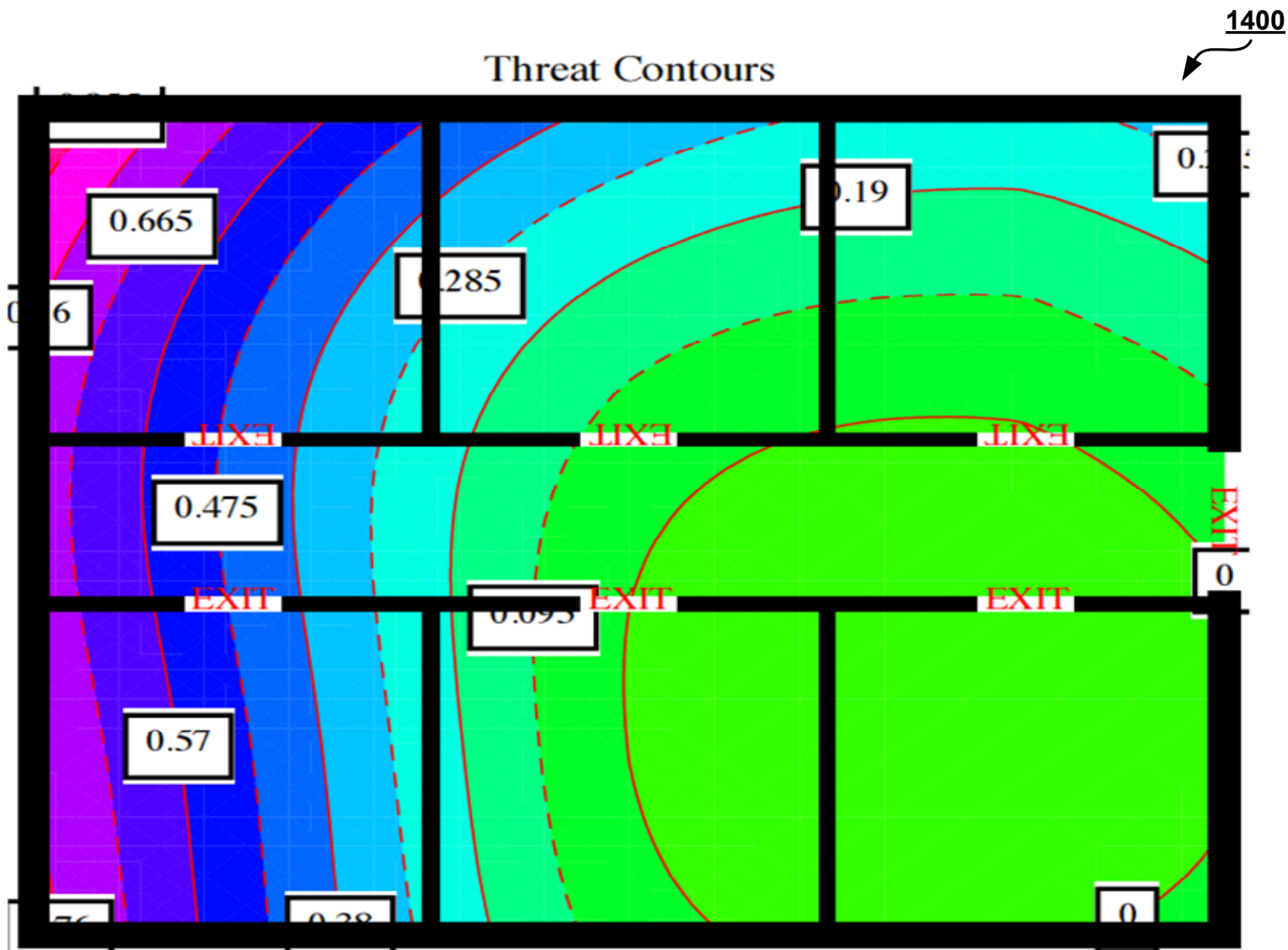


Figure 14

Example: Outputted Threat Contour Display